

Caravan Space

SLC



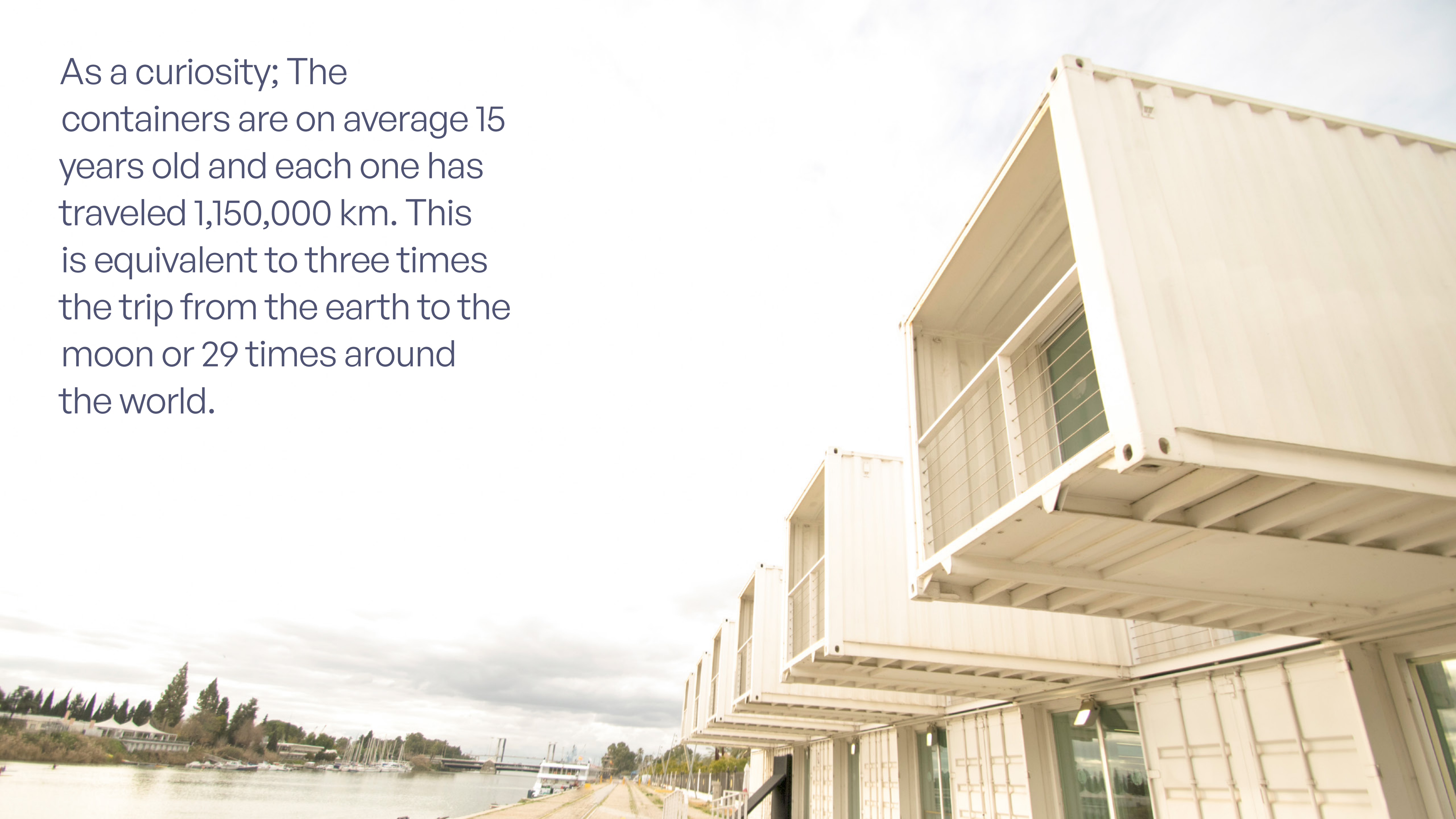
Caravan Space

We present a new avant-garde location in the port area of Seville.

The building has been solved using maritime containers, for the place where it is erected, next to the historic center, it demanded an object of architectural quality that would promote dialogue between the port and its urban environment.



As a curiosity; The containers are on average 15 years old and each one has traveled 1,150,000 km. This is equivalent to three times the trip from the earth to the moon or 29 times around the world.





An industrial space for events

- A 600m² plant
- Container Overlay

The building is made up of separate high cube containers in parallel, and standard containers are placed in the space between them, obtaining double heights that relieve the space and give a more open and diaphanous feeling.

At the east and west ends, windows and skylights are designed so that ventilation is pleasant in the environment.

Caravan Space

The exterior white paint allows the reflection of up to 90 percent of solar radiation and its special composition with ceramic microspheres prevents excessive heating.

The external volumetry generated dialogues with the environment. The separate skylights allow you to see both banks through them. Up close, they clearly show their nature as a shipping container. From the other shore, they form a low checkerboard-shaped plinth that does not compete with the regionalist architecture behind it.





The finishes do not attempt to hide the industrial details that allow the containers to be recognized, giving an unmistakable personality to the space.



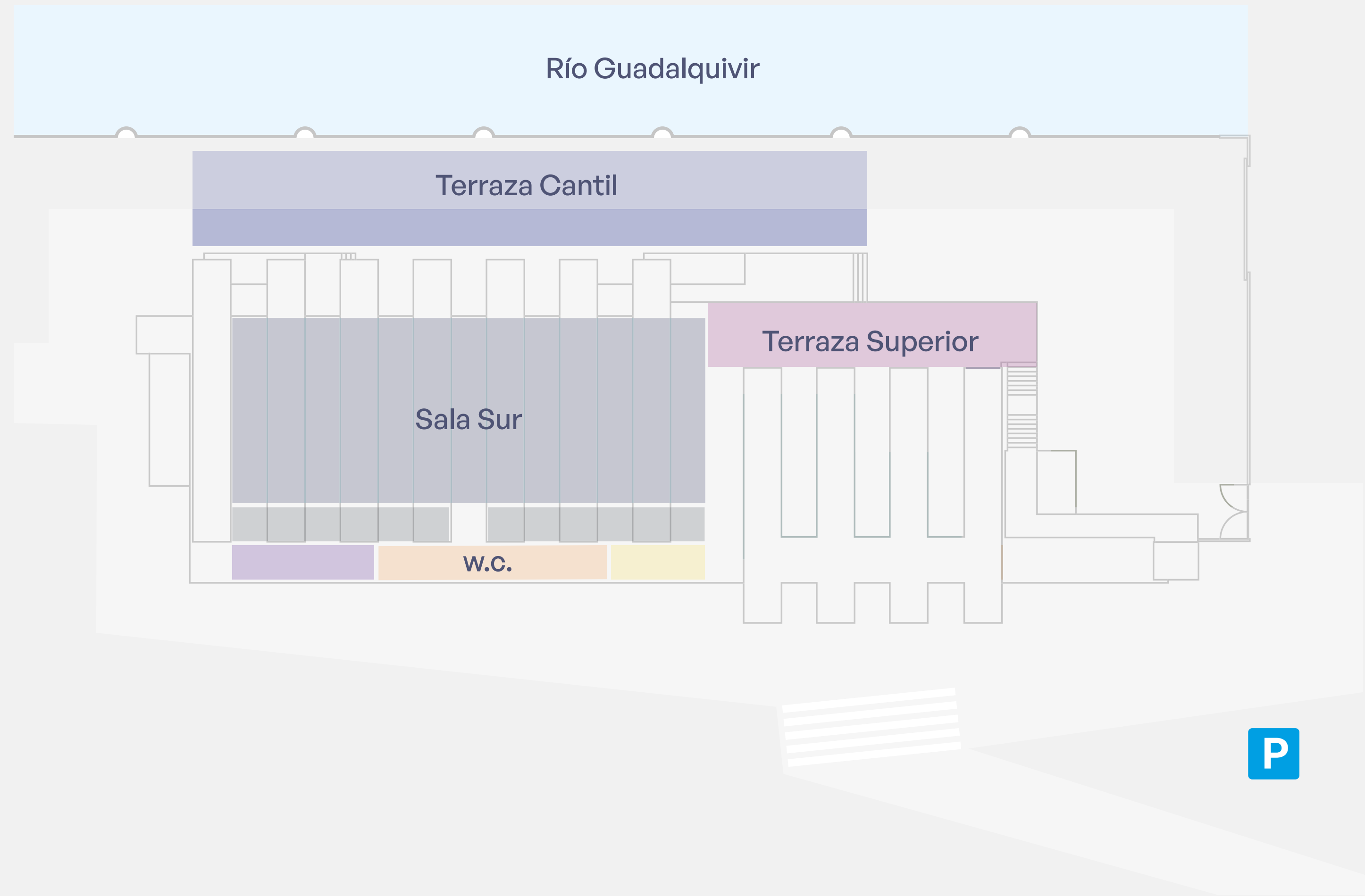
LOCATION

The building is located in a unique enclave, on the banks of the Guadalquivir River. With natural lighting throughout the day and when night falls you can enjoy wonderful views of an illuminated Seville ready for nightlife.

SPACE

The place is divided into different areas, each with its own personality and completely adaptable to any type of event.

The space has public parking nearby and has two interior rooms and two external spaces.









SOUTH ROOM

It is undoubtedly the leading and most versatile space in Mude Market. It is a multifunctional space with the capacity to adapt to a large number of uses. Open plan separated by columns that make up a side hallway.

The equipment, its modern architecture, and the possibilities of adapting the space, facilitate the complete customization of the space to project the image of the event. Presentations, corporate events, meetings or any corporate action is highly appropriate and powerful in this room. It can be connected to the North Room by expanding its floor by 600m².





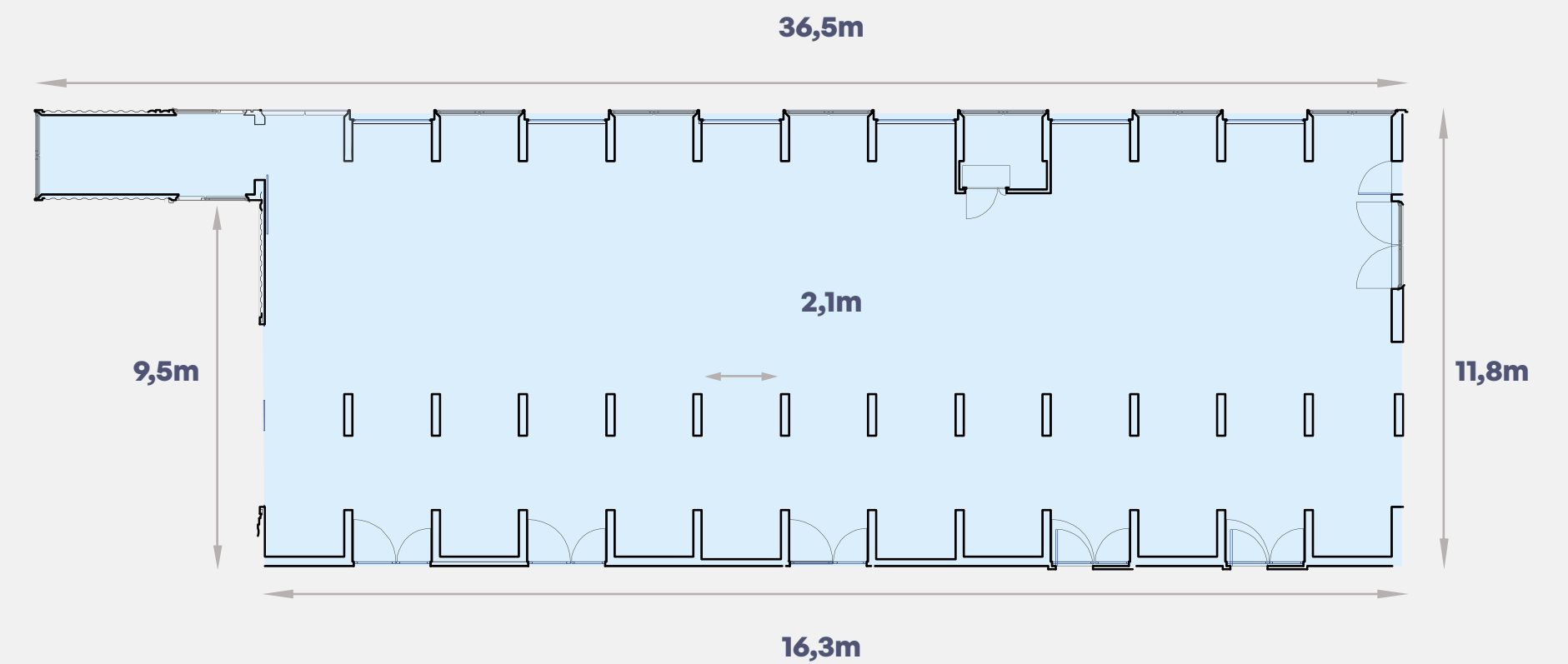


Open and versatile space

Approximate area: 400m²

Good lighting and views to the outside

Capacity: 150 pax in theater, 200 pax in cocktail.





CANTIL TERRACE

The terrace is the point of maximum attraction and allows you to enjoy the Sevillian breeze with magnificent views of the Guadalquivir River.

It is the optimal space to hold cocktails outdoors and with its own lighting according to the industrial personality of the building, which will create the ideal atmosphere and delight your clients.





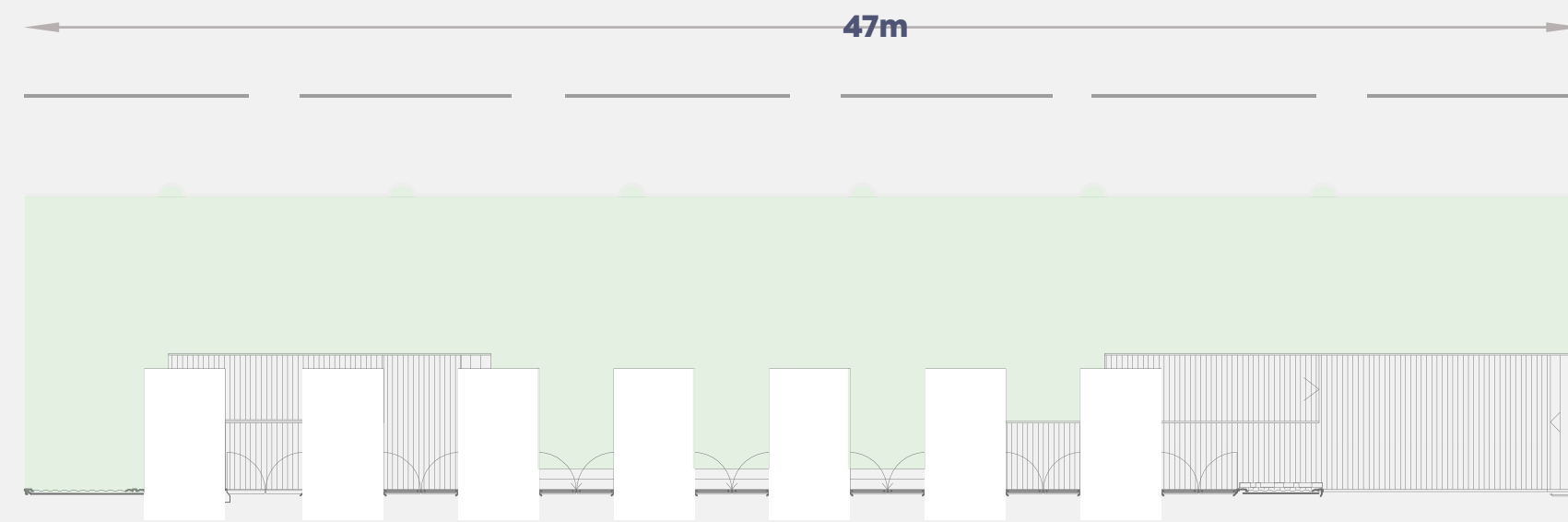
Caravan Space

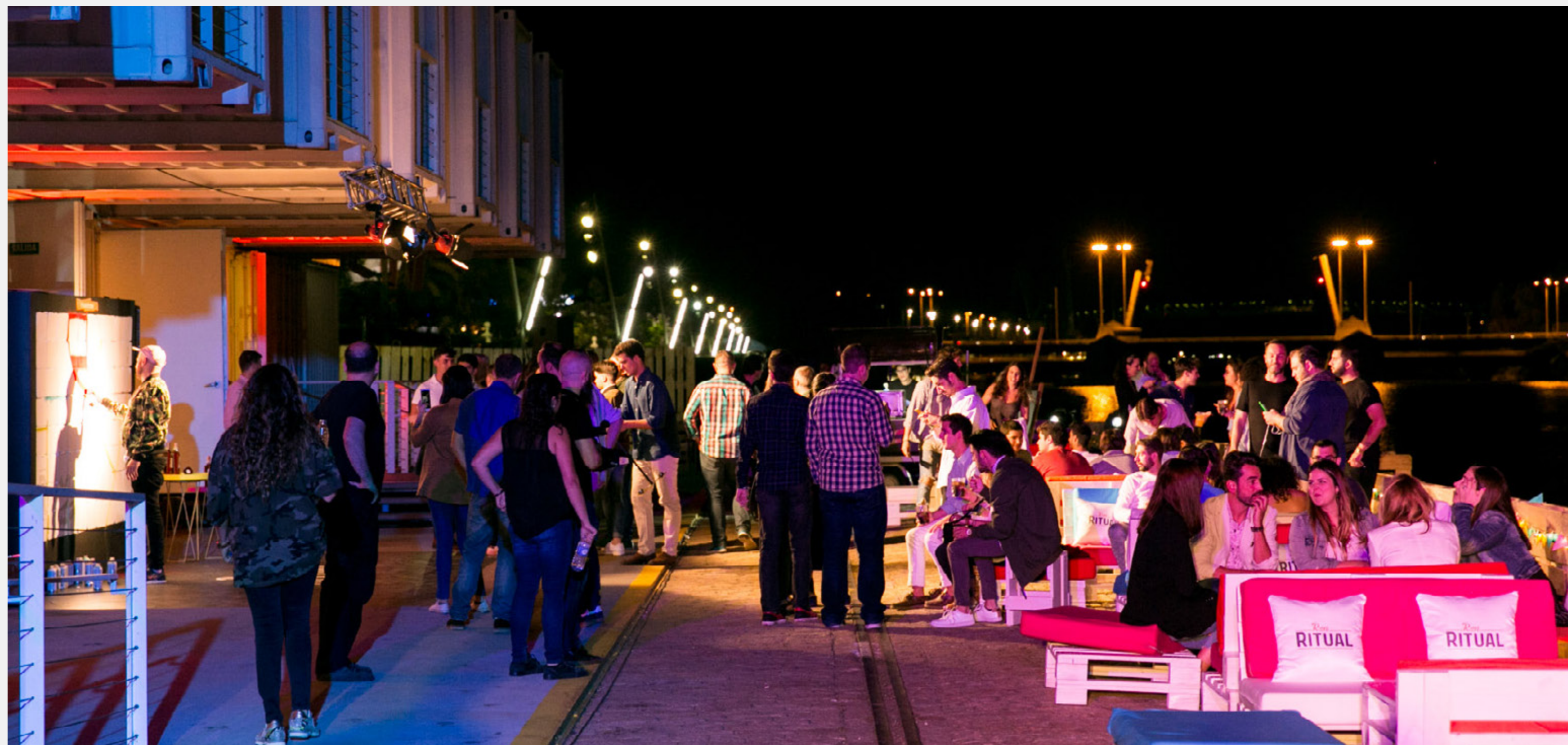


Outer space

Car Accessible

Approximate area: 400m²





UPPER TERRACE

The upper floor is the ideal space for cocktails and small presentations, it preserves the industrial personality of Mude Market but with the charm of good views at a low altitude and enjoying the breeze on the banks of the river.

It has about 200 m² and is completely customizable for corporate events.







SQUARE

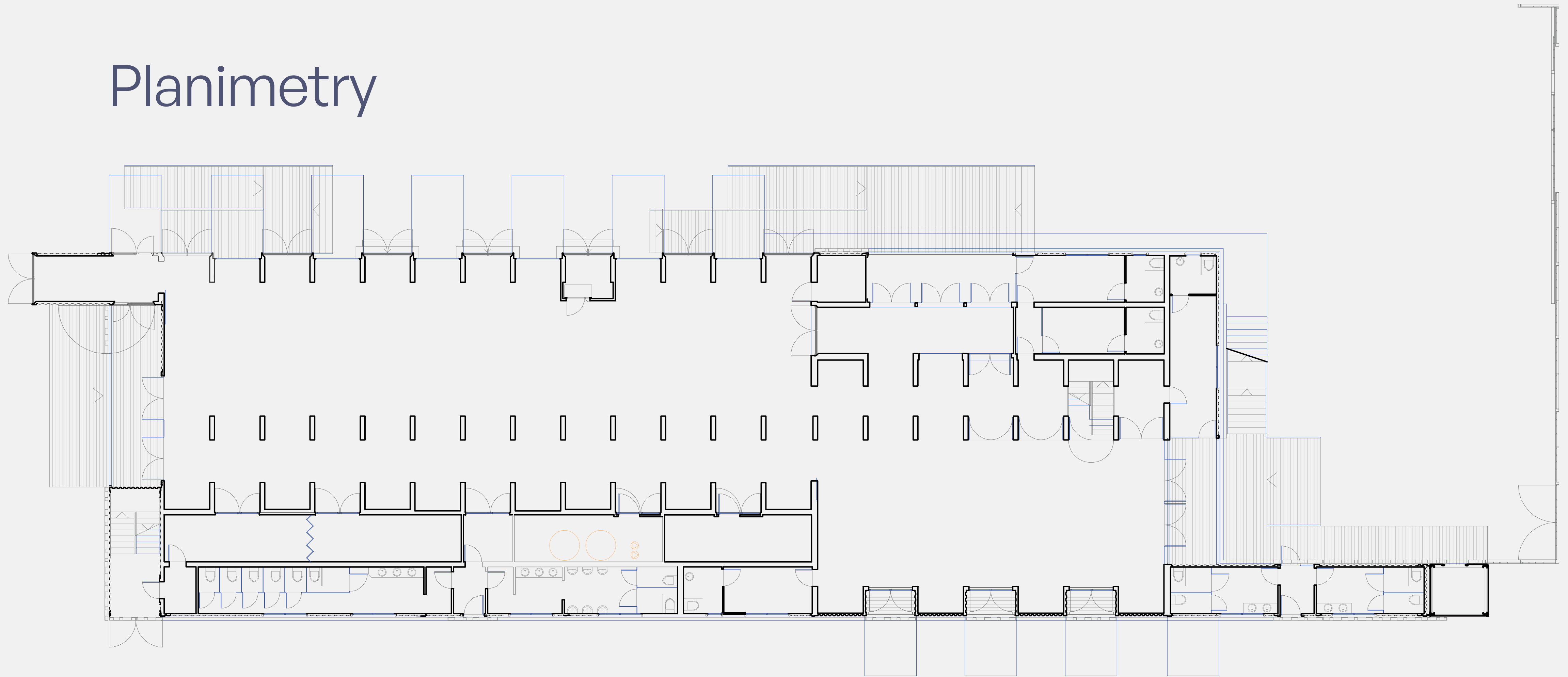
The upper floor is the ideal space for cocktails and small presentations, it preserves the industrial personality of Mude Market but with the charm of good views at a low altitude and enjoying the breeze on the banks of the river.

It has about 200 m² and is completely customizable for corporate events.



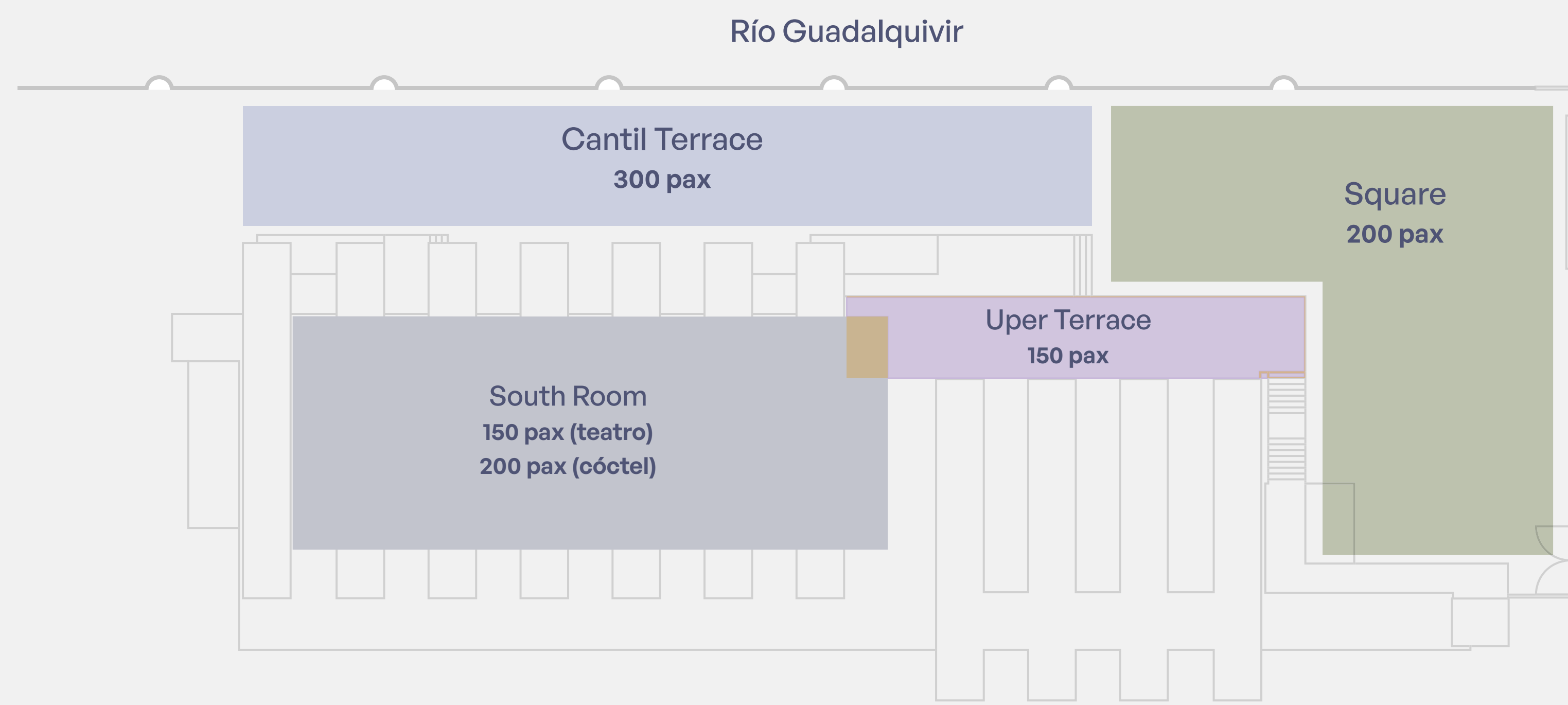


Planimetry



Electrical Installation Plans





Elements to Personalize



Shabby&Chic

All rights reserved. All the content of this project as well as others designed, created and produced by ISB Spain (Shabby&Chic) are protected by copyright.

Shabby&Chic is the owner of the property rights, intellectual property and other intellectual and industrial property rights of the services and content of its projects and the reproduction, copy or adaptation of the same is strictly prohibited without the express consent of the company.