

Hacienda la Almazara

S&C

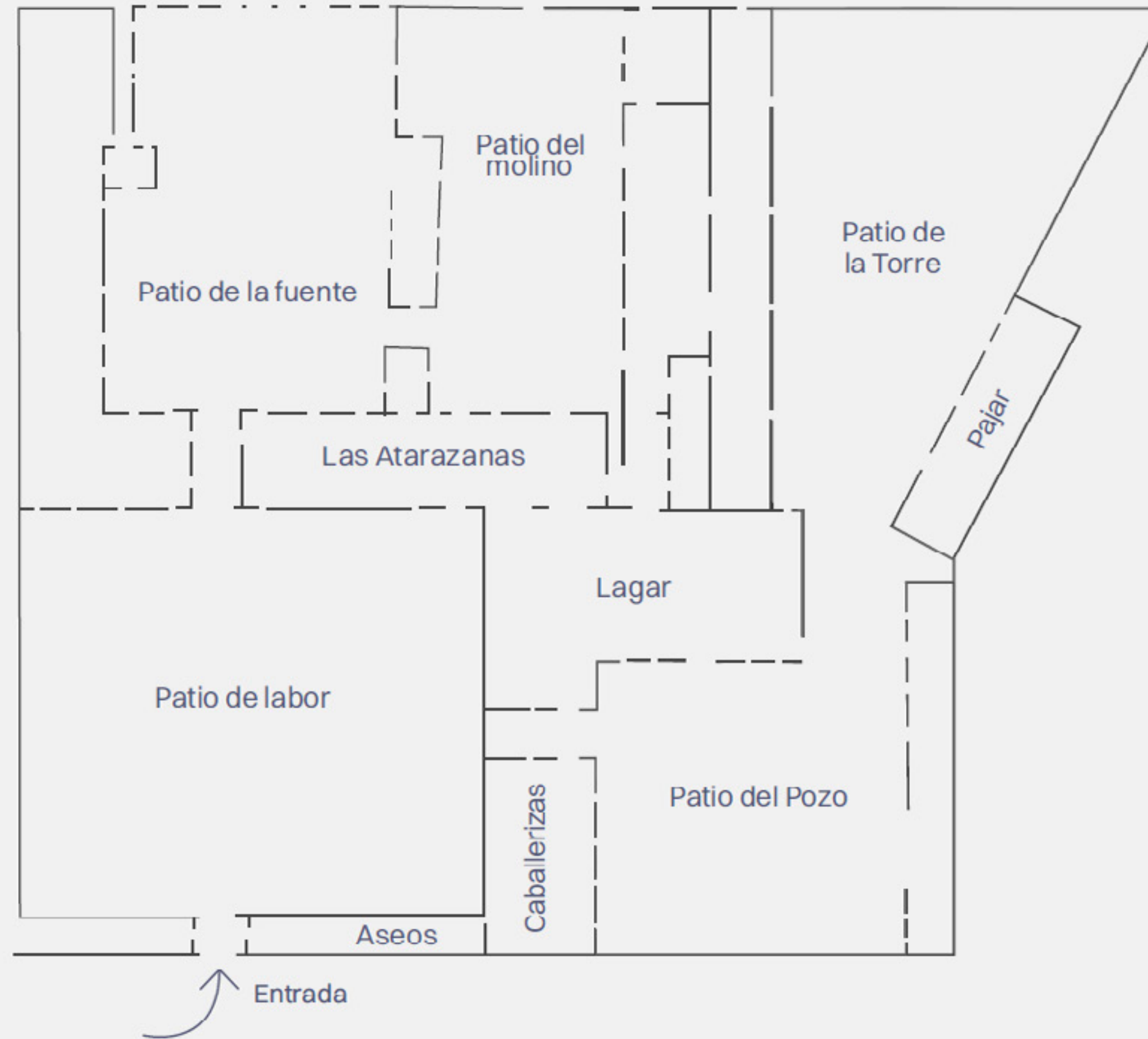


This venue is located just 15 minutes from Seville and offers different spaces for hosting events and conventions.

Hacienda la Almazara was originally the farmhouse of an olive grove, becoming one of the first constructions of Sevillian Baroque, with 400 years of history within its stone walls.







## Atarazanas

🍷 350 pax

🍷 280 pax

## Lagar

🍷 550 pax

🍷 450 pax

## Caballerizas

🍷 200 pax

🍷 150 pax

## Patio de la fuente

🍷 450 pax

🍷 300 pax

## Patio Principal

🍷 1500 pax

🍷 1000 pax

La página de ajuste

Outdoor Patios



ZOIDE L. S. D. FRAN.  
GOMDEBARRE, CAV. DELA  
ORD. DES. TIAGO EL CON. S.  
E. S. M. EN EL TRIBV. CON. T.  
MEQVNT. INT. TADM.  
DE LAS

R. FAVETA V.  
ELO SOV. REIN. DAN  
IVE. IN. SERV. DI. S. M.  
RA



## Atarazanas





## Lagar





# Shabby&Chic

All rights reserved. All the contents of this project as well as others designed, created and developed by ISB Spain (Shabby&Chic) are protected by copyright.

Shabby&Chic is the owner of the property rights, intellectual property and other intellectual and industrial property rights of the services and contents of its projects and it is strictly forbidden to reproduce, copy or adapt them without the express consent of the company.