

# Caravan Space

*SLC*







# Caravan Space

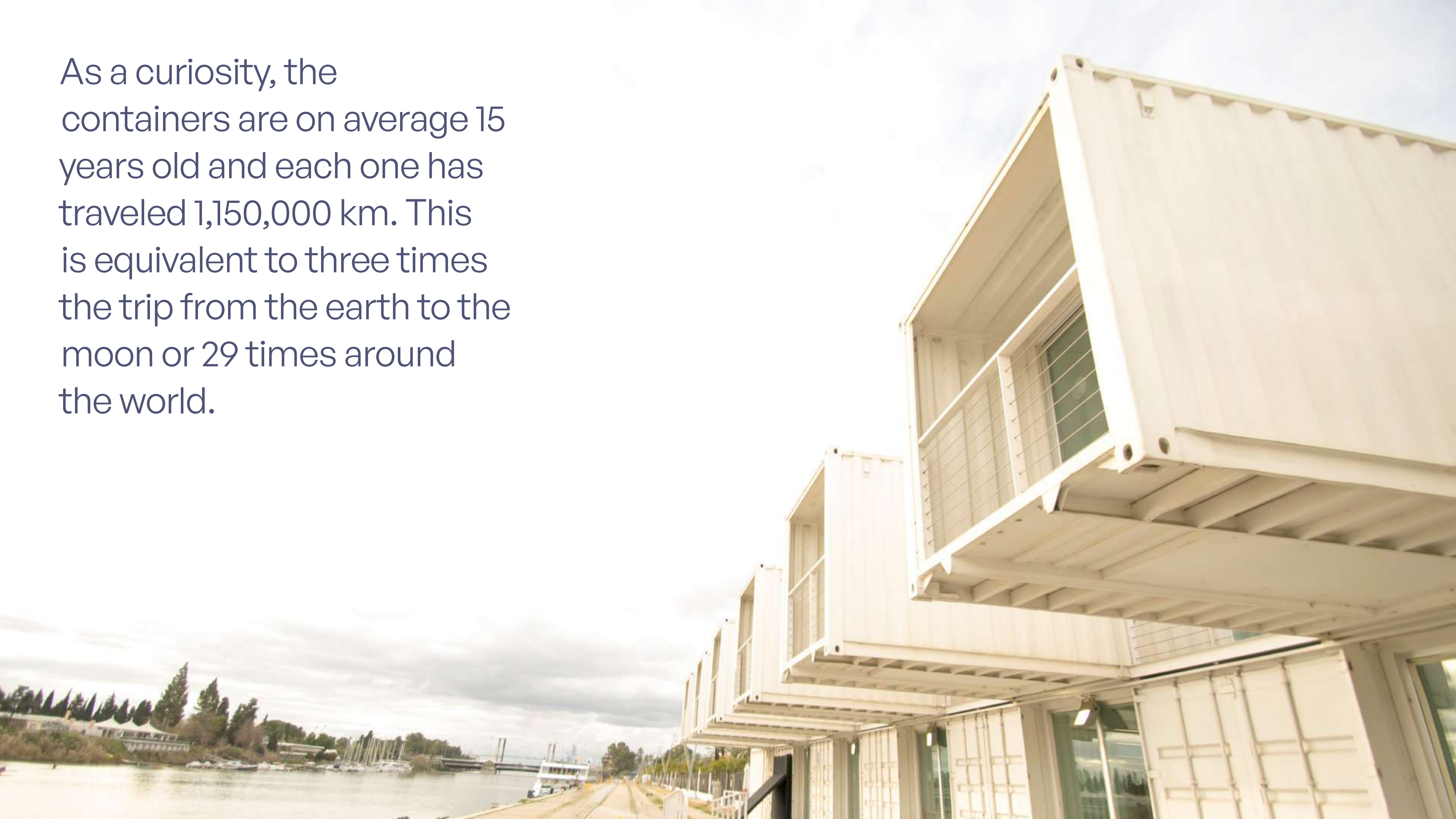
We present a new avant-garde location in the port area of Seville.

The building has been solved using maritime containers, for the place where it is erected, next to the historic center, it demanded an object of architectural quality that would promote dialogue between the port and its urban environment.





As a curiosity, the containers are on average 15 years old and each one has traveled 1,150,000 km. This is equivalent to three times the trip from the earth to the moon or 29 times around the world.







## An industrial space for events

- A 600m<sup>2</sup> plant
- Container Overlay

The building is made up of separate high cube containers arranged in parallel, with standard containers placed in the space between them.

This configuration creates double heights that open up the space and give a more open and transparent feeling. Windows and skylights are designed at the east and west ends to ensure pleasant ventilation in the environment.



The exterior white paint allows for the reflection of up to 90 percent of solar radiation, while its special composition with ceramic microspheres prevents excessive heating. The external volume created engages in dialogue with the environment. Separate skylights allow views of both banks through them. Up close, they clearly reveal their nature as shipping containers.

From the opposite shore, they form a low checkerboard-shaped plinth that does not compete with the regionalist architecture behind it.







The finishes do not attempt to hide the industrial details that allow the containers to be recognized, giving an unmistakable personality to the space.





## LOCATION

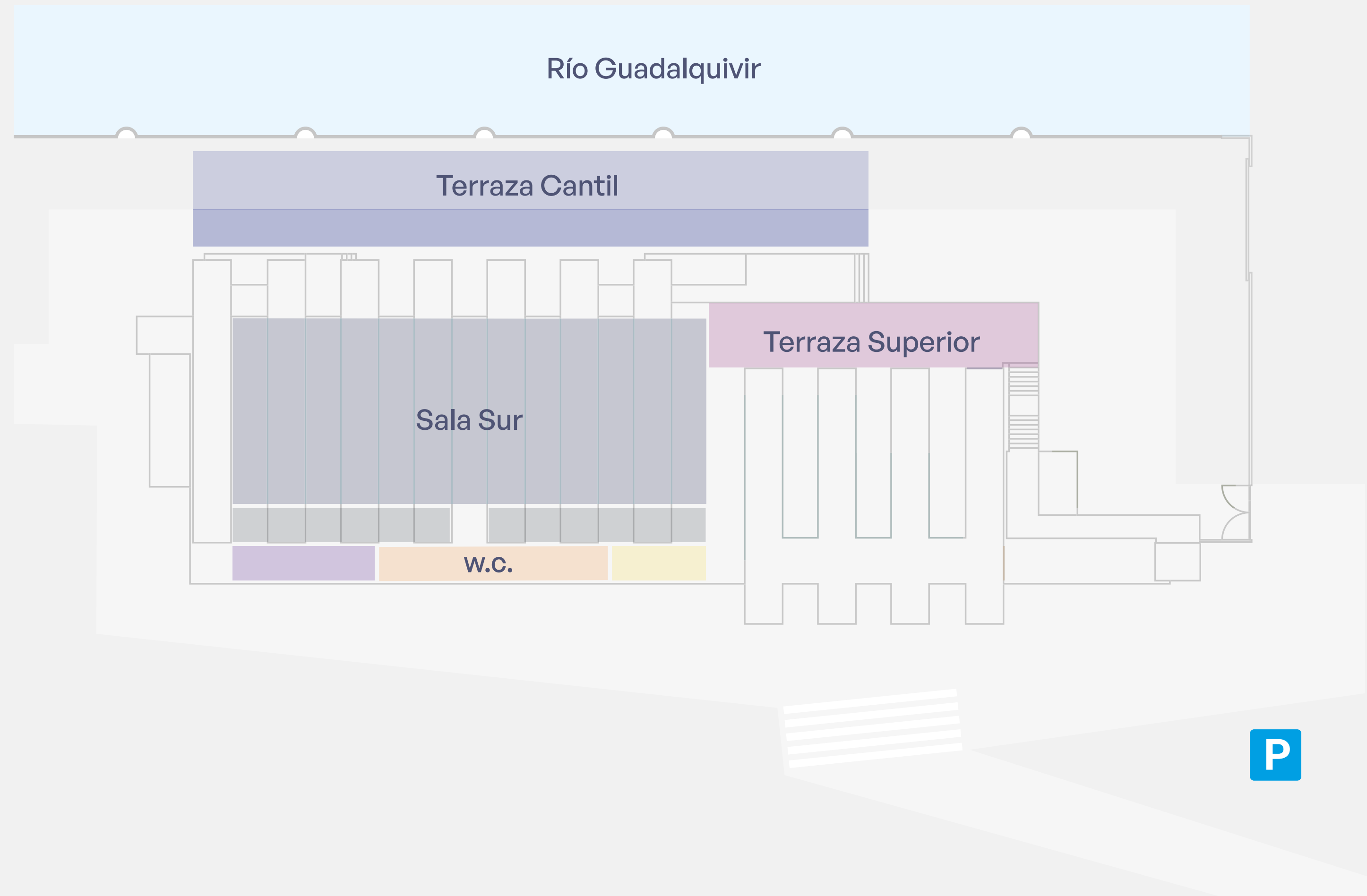
The building is located in a unique enclave, on the banks of the Guadalquivir River. With natural lighting throughout the day, and when night falls, you can enjoy wonderful views of an illuminated Seville ready for nightlife.



## SPACE

The place is divided into different areas, each with its own personality and completely adaptable to any type of event.

The space has nearby public parking and includes two interior rooms as well as two external spaces.

















## SOUTH ROOM

It is undoubtedly the leading and most versatile space in Mude Market. A multifunctional area with the capacity to adapt to a wide range of uses, it features an open-plan layout separated by columns that form a side hallway.

The modern architecture, equipment, and flexibility of the space facilitate complete customization to project the desired image for any event. Whether it's presentations, corporate events, meetings, or any other corporate action, this room is highly suitable and impactful. Additionally, it can be connected to the North Room, expanding its floor area by 600m<sup>2</sup>.









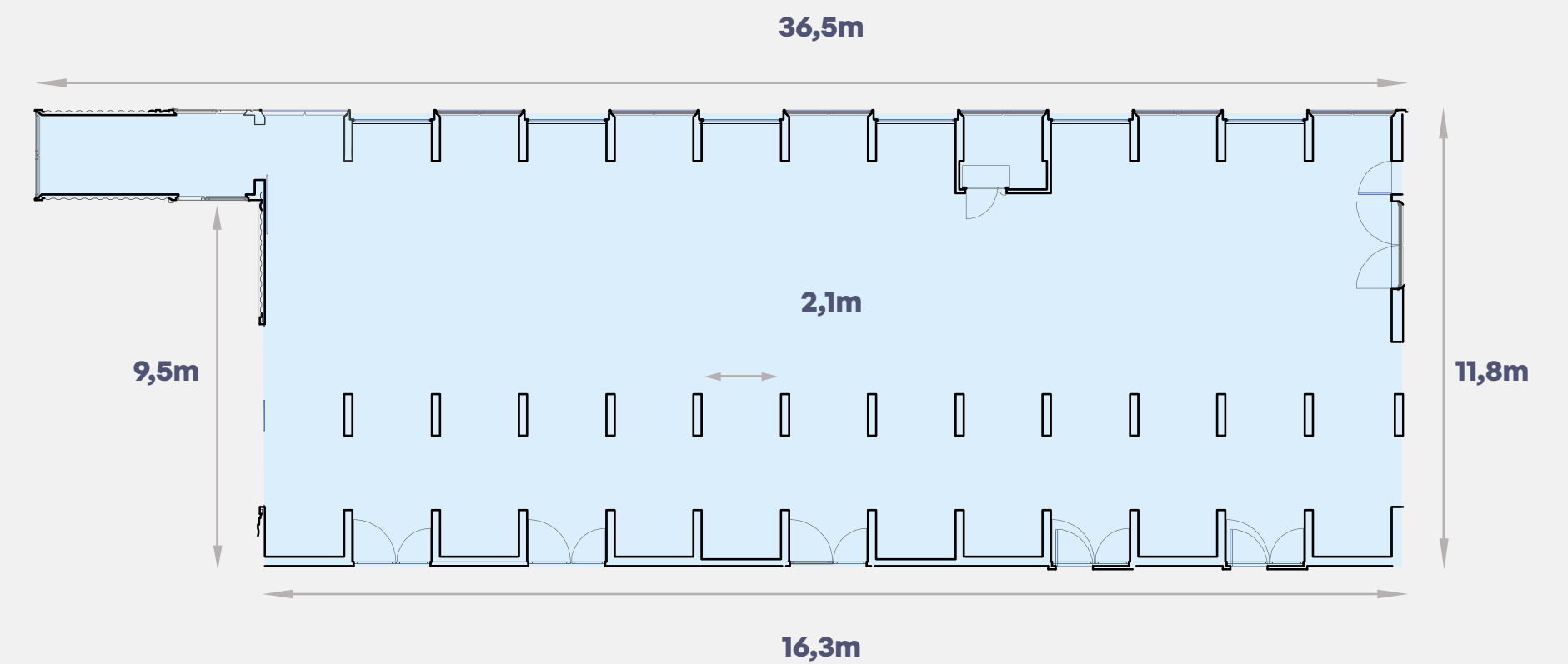


Open and versatile space

Approximate area: 400m<sup>2</sup>

Good lighting and views to the outside

Capacity: 150 pax in theater, 200 pax in cocktail.









## CANTIL TERRACE

The terrace is the point of maximum attraction and allows you to enjoy the Sevillian breeze with magnificent views of the Guadalquivir River.

It is the optimal space to hold cocktails outdoors and with its own lighting according to the industrial personality of the building, which will create the ideal atmosphere and delight your clients.









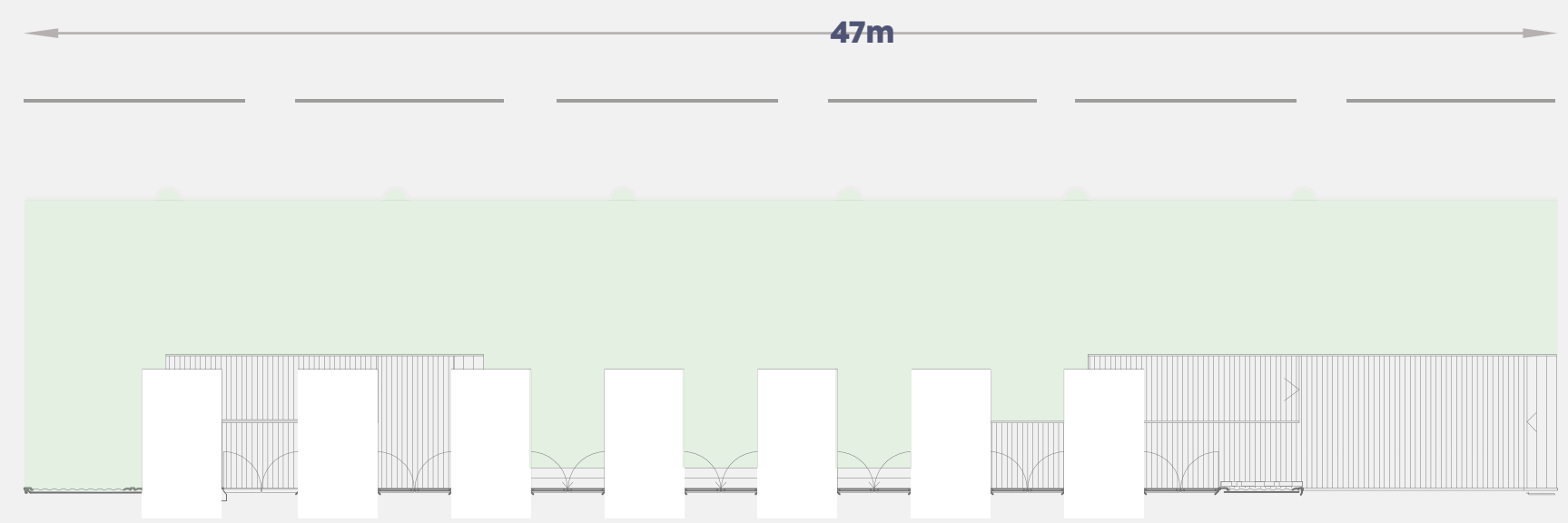
# Caravan Space



Outer space

Car Accessible

Approximate area: 400m<sup>2</sup>









## UPPER TERRACE

The upper floor is the ideal space for cocktails and small presentations. It preserves the industrial personality of Mude Market but with the charm of good views at a low altitude and enjoying the breeze on the banks of the river.

It has about 200 m<sup>2</sup> and is completely customizable for corporate events.













## SQUARE

The upper floor is the ideal space for cocktails and small presentations. It preserves the industrial personality of Mude Market but with the charm of good views at a low altitude and enjoying the breeze on the banks of the river.

Covering an area of approximately 200 square meters, it is completely customizable for corporate events.

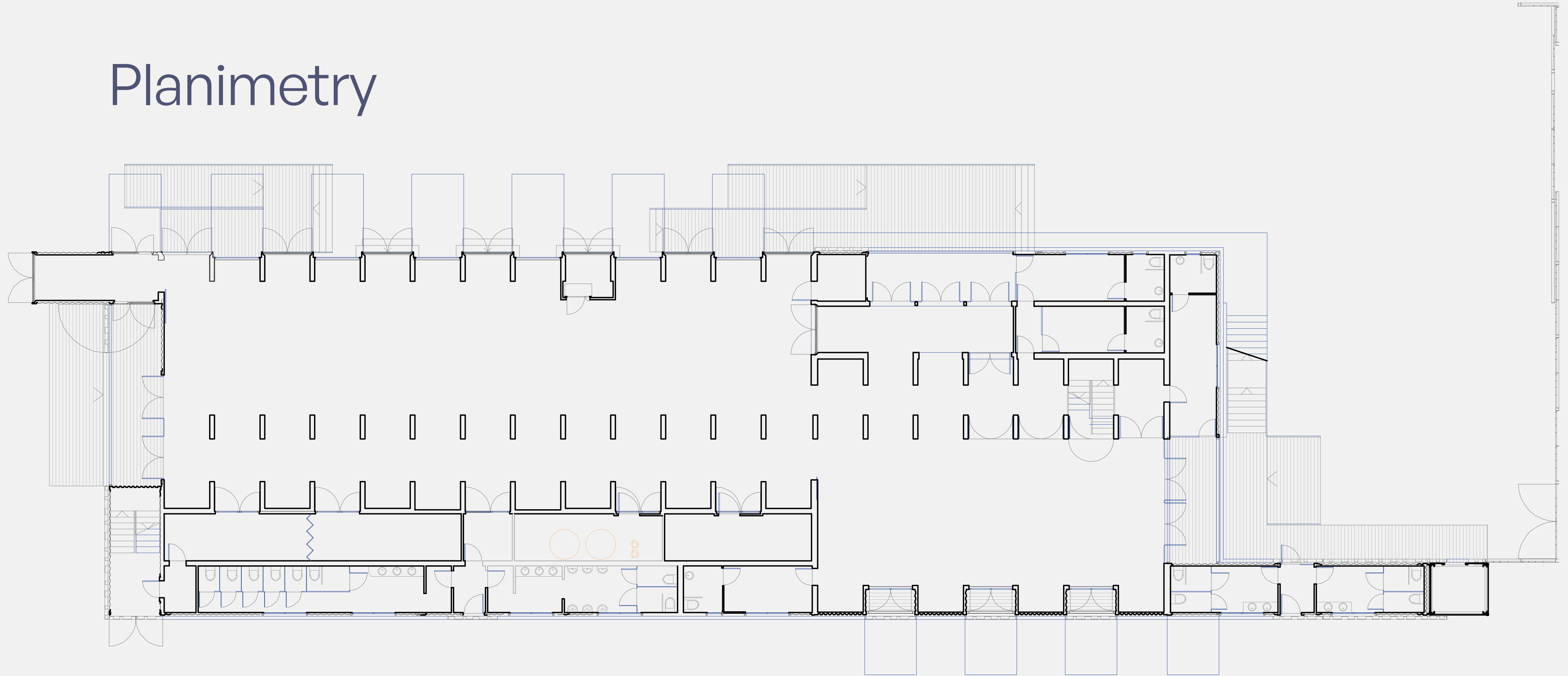








## Planimetry

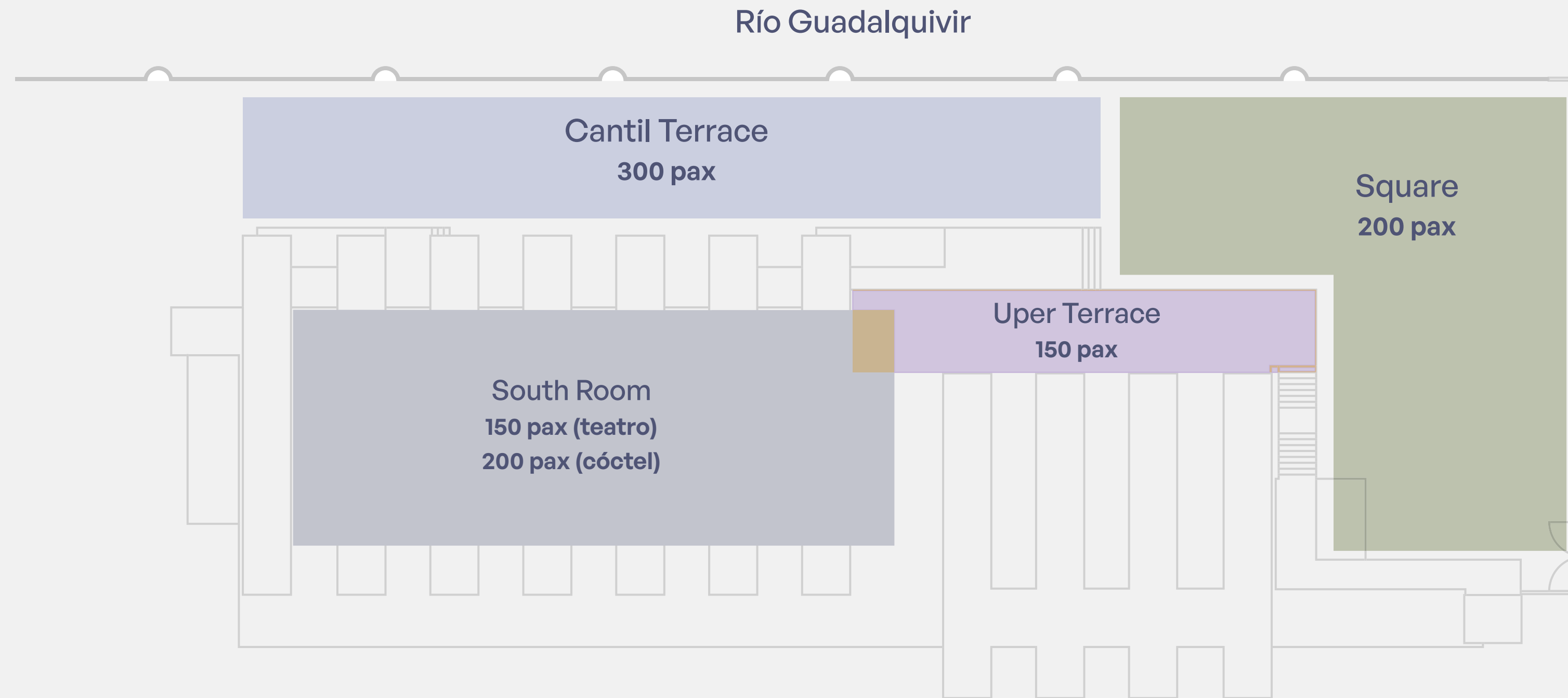




# Electrical Installation Plans









## Elements to Personalize





# Shabby&Chic

All rights reserved. All the content of this project as well as others designed, created and produced by ISB Spain (Shabby&Chic) are protected by copyright.

Shabby&Chic is the owner of the property rights, intellectual property and other intellectual and industrial property rights of the services and content of its projects and the reproduction, copy or adaptation of the same is strictly prohibited without the express consent of the company.